

SUBMITTAL DATA: SEZ-KD15NA

15,000 BTU/H HORIZONTAL-DUCTED INDOOR UNIT FOR MXZ MULTI-ZONE HEAT-PUMP SYSTEMS

Job Name: _____	Location: _____	Date: _____
Purchaser: _____	Engineer: _____	
Submitted to: _____	For <input type="checkbox"/> Reference <input type="checkbox"/> Approval <input type="checkbox"/> Construction	
System Designation: _____	Schedule No.: _____	

GENERAL FEATURES

- Ceiling-concealed ducted indoor unit for residential applications
- Ultra thin body: 7-7/8" high
- Built-in drain mechanism for condensate removal; lifts to 21-11/16"
- Air filter is included with indoor unit
- Quiet operation — as low as 23 dBA
- PAR-21MAA wired remote controller is included
- Indoor unit powered from outdoor unit using A-Control
- Automatic fan speed control
- Auto restart following a power outage
- Limited warranty: five years on parts and defects and seven years on compressors

OPTIONAL ACCESSORIES

- M-NET Control Adapter (MAC-399IF)
- External Heat Adapter (PAC-YU25HT)
- CN24 Relay Kit (CN24RELAY-KIT-CM)
- Three-pole Disconnect Switch (TAZ-MS303)

Cooling*

Rated Capacity 15,000 Btu/h
 Total Input 90 W
 Current 0.74 A

Heating*

Rated Capacity 18,000 Btu/h
 Total Input 70 W
 Current 0.63 A

* Rating Conditions (Cooling) - Indoor: 80°F (27°C) DB / 67°F (19°C) WB.
 Outdoor: 95°F (35°C) DB / 75°F (24°C) WB.
 (Heating) - Indoor: 70°F (21°C) DB / 60°F (16°C) WB. Outdoor: 47°F (8°C) DB / 43°F (6°C) WB.

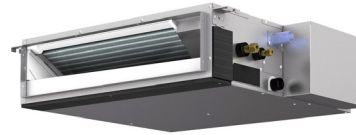
(For data on specific indoor units [all ducted, all non-ducted, and both ducted and non-ducted] combinations, see the MXZ Technical and Service Manual.)

Electrical Requirements

Power Supply 208 / 230V, 1-Phase, 60 Hz
 MCA 1 A

Voltage

Indoor - Outdoor S1-S2 AC 208 / 230V
 Indoor - Outdoor S2-S3 DC 24V



Indoor Unit: SEZ-KD15NA



Remote Controller: PAR-21MAA

Fan

Type x Quantity Sirocco Fan x 3
 Motor Direct-driven DC Brushless Motor
 Motor Output 96 W
 Airflow (Lo - Med - Hi) 353 - 441 - 529 CFM
 Air Filter Polypropylene Honeycomb
 External Static Pressure 0.02 - 0.06 - 0.14 - 0.20" WG
 Sound Pressure Level (Lo - Med - Hi) 30 - 34 - 37 dB(A)

DIMENSIONS	UNIT INCHES / MM
W	39 / 990
D	27-9/16 / 700
H	7-7/8 / 200

Weight 51 lbs. / 23 kg

Field Drainpipe Size O.D. 1-1/4" / 32 mm
 Wall-mounted Remote Controller PAR-21MAA
 (See Data Submittal Sheet)

Refrigerant Type R410A
 Refrigerant Pipe Size O.D.
 Gas Side 1/2" / 12.7 mm
 Liquid Side 1/4" / 6.35 mm
 Connection Method Flared

MXZ-B SERIES HEAT-PUMP OUTDOOR UNITS


Outdoor Unit: MXZ-3B30NA

MXZ-B MULTI-ZONE SYSTEMS CAN INCLUDE:

- Ducted Indoor Units:
SEZ-KD09,12,15,18NA, PEAD-A24AA
 - Nonducted Indoor Units:
MSZ-GE06,09,12,15,18NA, MSZ-GA24NA, MSZ-FE09,12NA, MFZ-KA09,12,18NA, PCA-A24KA, and PLA-A12,18,24BA
 - A combination of both Ducted and Nonducted Indoor Units
- Refer to the separate submittal forms for the MSZ-GE, MSZ-GA, MSZ-FE, SEZ-KD, PEAD, PCA, PLA Indoor Units, and MXZ Outdoor Units.



MSZ-GE06,09,12,15,18NA and MSZ-GA24NA



Wireless Remote Controller -
 Packaged with MSZ-GE, -GA,
 -FE and MFZ-KA (Optional Wired
 Remote Controller PAR-21MAA)



MSZ-FE



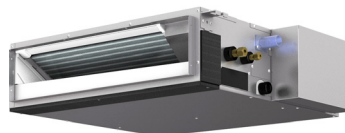
MFZ-KA


INVERTER


PCA-KA



PLA-A12,18,24BA



SEZ-KD and PEAD-A24

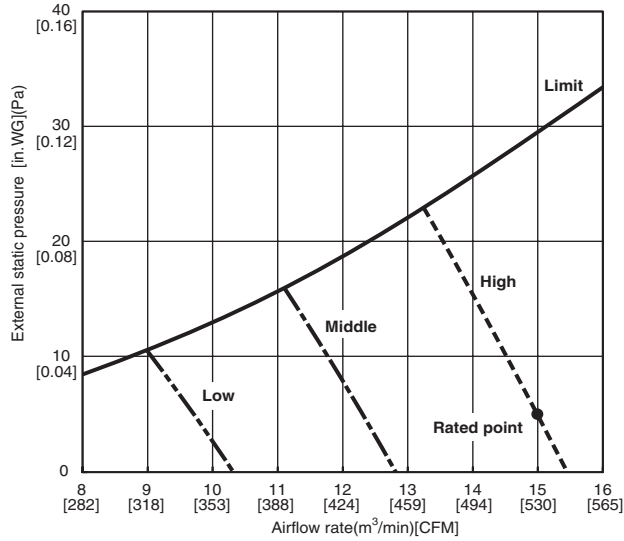


Remote Controller PAR-21MAA - Packaged with PCA-KA, PLA-ABA, SEZ, and PEAD

SEZ-KD15NA INDOOR FAN PERFORMANCE AND CORRECTED AIR FLOW CHARTS

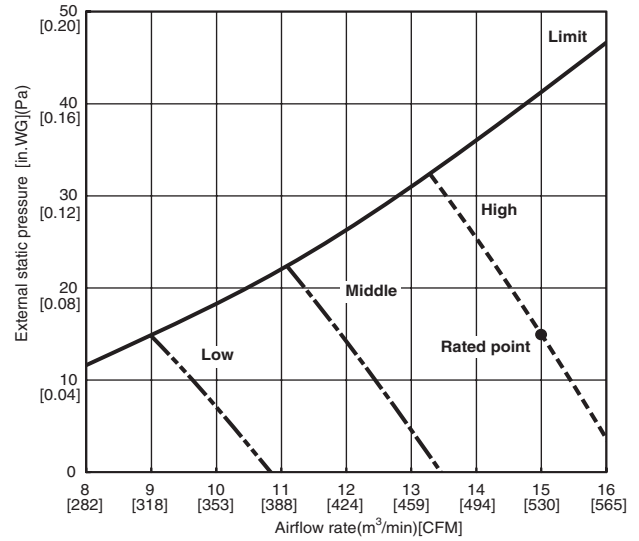
SEZ-KD15NA

(External static pressure 0.02[in.WG](5Pa)) 208/230V 60Hz



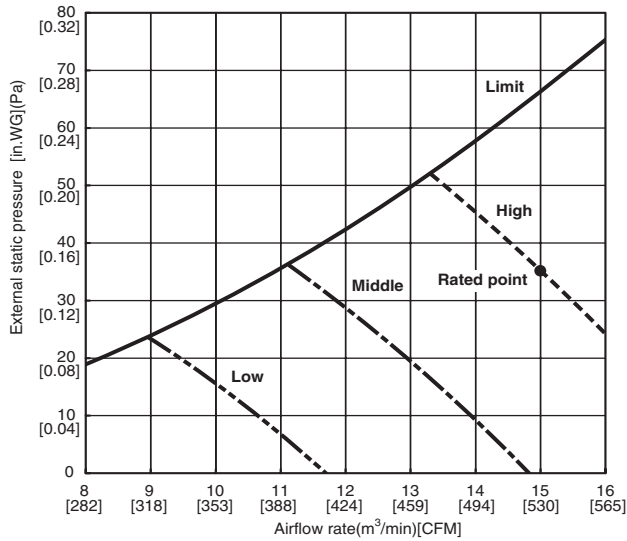
SEZ-KD15NA

(External static pressure 0.06[in.WG](15Pa)) 208/230V 60Hz



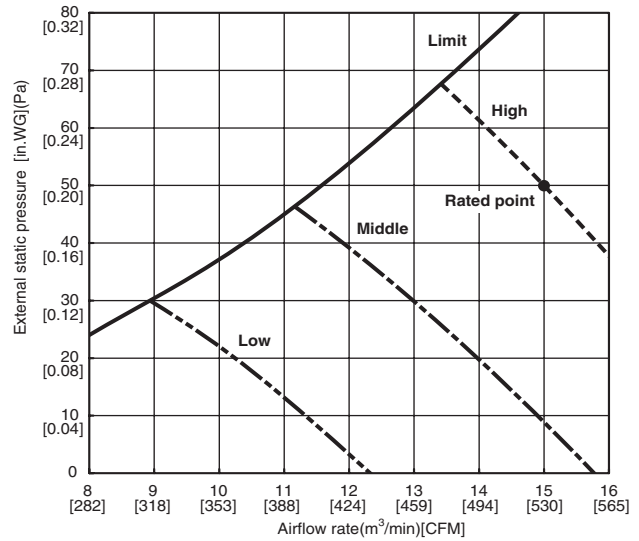
SEZ-KD15NA

(External static pressure 0.14[in.WG](35Pa)) 208/230V 60Hz



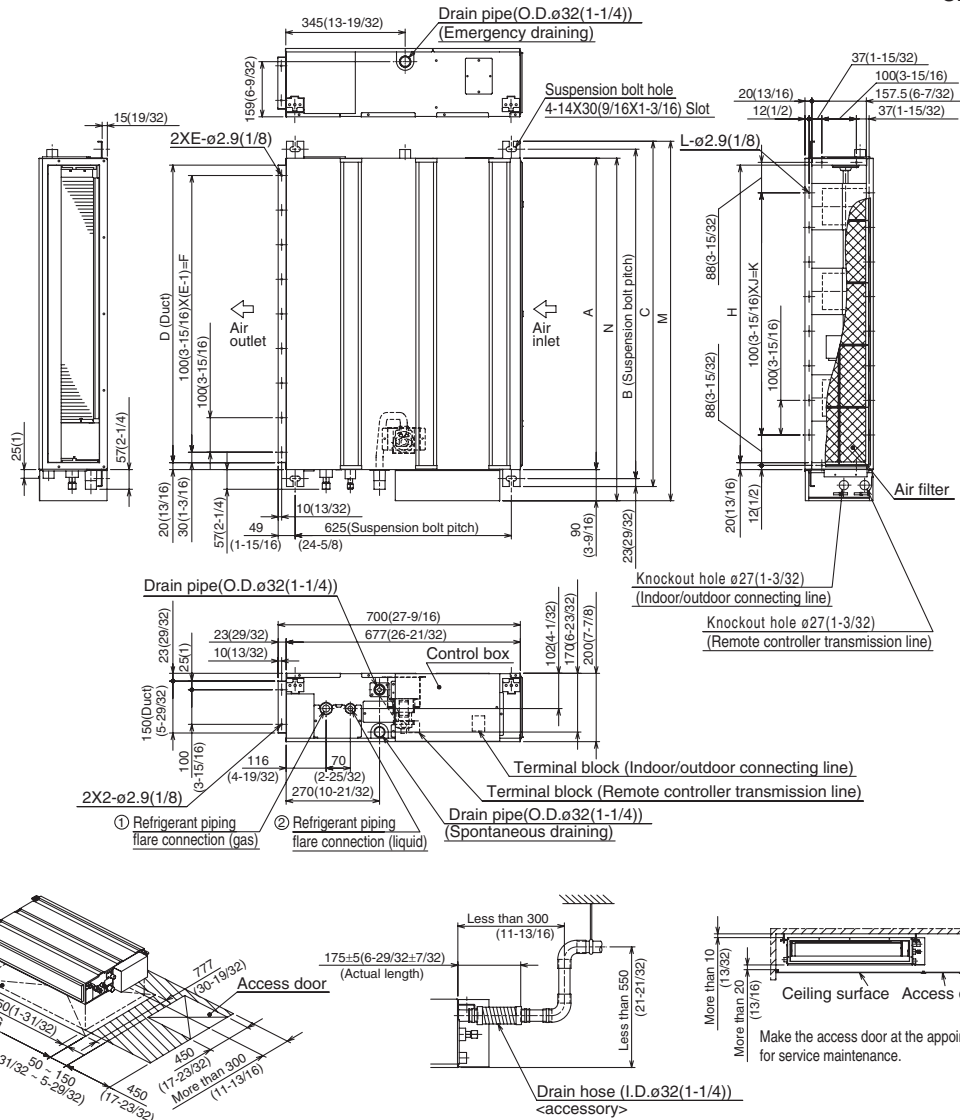
SEZ-KD15NA

(External static pressure 0.20[in.WG](50Pa)) 208/230V 60Hz



DIMENSIONS: SEZ-KD15NA

Unit : mm(in.)

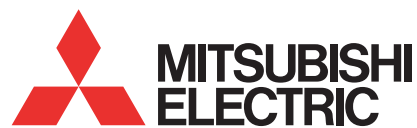


Required space for service and maintenance

mm(in.)

Model	A	B	C	D	E	F	G	H	J	K	L	M	N	① Gas pipe	② Liquid pipe
SEZ-KD09NA	700 (27-9/16)	752 (29-3/8)	798 (31-7/16)	660 (26)	7	600 (23-5/8)	800 (31-1/2)	660 (26)	5	500 (19-11/16)	16	839 (33-1/8)	790 (31-1/8)	ø9.52(3/8)	ø6.35(1/4)
SEZ-KD12NA	900 (35-7/16)	952 (37-1/2)	998 (39-5/16)	860 (33-7/8)	9	800 (31-1/2)	1000 (39-3/8)	860 (33-7/8)	7	700 (27-9/16)	20	1039 (40-29/32)	990 (39)		
SEZ-KD15NA	1100 (43-5/16)	1152 (45-3/8)	1198 (47-3/16)	1060 (41-3/4)	11	1000 (39-3/8)	1200 (47-1/4)	1060 (41-3/4)	9	900 (35-7/16)	24	1239 (48-25/32)	1190 (46-7/8)		

- Note 1. Use M10 screw for the suspension bolt (field supply).
 2. Keep the service space for the maintenance at the bottom.
 3. This chart indicates for SEZ-KD15NA model, which has 3 fans.
 SEZ-KD09, 12NA models have 2 fans.
 SEZ-KD18NA models have 4 fans.
 4. In case an inlet duct is used, remove the air filter (supply with the unit), then install the filter (field supply) at suction side.



HVAC Advanced Products Division
 3400 Lawrenceville Suwanee Rd
 Suwanee, GA 30024
 Tele: 678-376-2900 • Fax: 800-889-9904
 Toll Free: 800-433-4822 (#3)
 www.mehvac.com
Specifications are subject to change without notice.